



欧希德
O S H I D



广东欧希德精密智造科技有限公司

Guangdong Oshid Precision Manufacturing Technology Co., Ltd.

公司简介

Introduction



CONTENTS

01	公司简介 / Introduction	06	质量控制体系 / Quality Control System
02	发展历程 / Milestone	07	业务领域 / Business Scope
03	全球生产基地 / Global Production Bases	08	行业展会与市场 / Trade Shows & Market
04	主要业务及能力 / Major Business and Capabilities	09	合作伙伴 / Partners
05	设备 / Equipment	10	未来展望 / Future Outlook



PART 01
公司简介
Introduction



欧希德
OSHID

公司简介

COMPANY PROFILE

广东欧希德精密智造科技有限公司自 2005 年创立于东莞，现已发展为精密智造领域的标杆企业。公司总投资 5 亿元，形成以东莞松山湖为品牌运营中心、深圳为创新设计中心的战略布局，并于 2026 年全面构建全球化生产网络。

目前，公司拥有四大生产基地协同运作：东莞石排 60000 平方米总部工厂与 13000 平方米专业压铸工厂双核联动，东莞寮步工厂完成提质升级，越南海防工厂实现稳定量产。四大基地全面覆盖压铸、注塑、模具制造、表面处理全产业链条，配备 1500 余名员工，凭借先进设备与专业团队，专注于键帽等核心产品的研发与智造，确保从设计到量产的每一个环节都达到高精度与卓越品质标准。

欧希德以创新的软胶与硬胶双色注塑技术为核心，业务覆盖智能产品研发、自动化设备研发等多领域，尤其在键帽制造领域实力强劲，年产能达 3600 万套，模具月产 60 套。公司重视技术创新，已荣获 250 项专利，致力于为全球客户提供定制化、高品质的产品与服务，是客户共创辉煌的优选合作伙伴。

广东欧希德精密智造科技有限公司

总投资与规模

总投资5亿人民币，以东莞松山湖为品牌运营，深圳为设计中心，东莞石排、寮步及越南三厂协同运作，共计1500余名员工。

核心竞争力

双色 / 多色注塑领先：掌握软胶与硬胶双色 / 多色注塑核心技术，替代传统喷油镭雕工艺，实现产品高精度与高外观一体化。

压铸全制程优势：打造 CNC 压铸 + 全制程表面处理一体化方案，专精中高端压铸喷油 / 喷粉外观件，是电脑周边压铸件核心制造商。

全产业链配套：覆盖模具设计、注塑成型、压铸加工至喷涂的全流程自主配套，为客户提供一站式定制化服务。

业务领域

涵盖塑胶、金属模具设计与制造、CNC压铸、注塑成型、智能产品研发、产品喷涂及自动化设备研发等领域。

键帽智造

年键帽产能高达3600万套，模具月生产量60套。



COMPANY PROFILE

Guangdong Oxiide Precision Manufacturing Technology Co., Ltd. was founded in Dongguan in 2005 and has now grown into a benchmark enterprise in the field of precision manufacturing. The company has a total investment of 500 million yuan, forming a strategic layout centered on the brand operation center in Songshan Lake, Dongguan, and an innovation design center in Shenzhen. It will fully establish a global production network in 2026.

Currently, the company has four production bases operating in synergy: the headquarters factory in Shierai, Dongguan, with an area of 60,000 square meters, and a professional die-casting factory with an area of 13,000 square meters, which are dual-core linked; the Dongluo factory has completed quality improvement and upgrade; the Haiphong factory in Vietnam has achieved stable mass production. The four bases comprehensively cover the entire process chain of die-casting, injection molding, mold manufacturing, and surface treatment, with 1,500 employees. By leveraging advanced equipment and a professional team, the company focuses on the research and manufacturing of core products such as key caps, ensuring that every step from design to mass production meets high precision and excellent quality standards.

Oxiide's core technology is the innovative dual-color injection molding technology of soft and hard rubber. Its business covers intelligent product research and development, and the research and development of automation equipment, etc. It is particularly strong in the key cap manufacturing field, with an annual production capacity of 36 million sets and a monthly production capacity of 60 molds. The company attaches great importance to technological innovation and has received 250 patents. It is committed to providing customized and high-quality products and services for global customers and is the preferred partner for customers to create brilliance together.



Guangdong Oshid Precision Manufacturing Technology Co., Ltd.



Total Investment and Scale

With a **500 million RMB** investment, Oshid operates from its Dongguan Songshan Lake hub and Shenzhen design center, with three factories in Vietnam, Dongguan Liaobu, and Dongguan Shipai, and over **1,500 employees**



Core Competitiveness

Leading in two-color / multi-color injection molding: Mastering the core technology of dual-color / multi-color injection molding for soft and hard plastics, replacing the traditional ink spraying and laser engraving processes, achieving high precision and integrated appearance of products.

Advantages in the entire die-casting process: Developing an integrated solution of CNC die-casting + the entire process of surface treatment, specializing in mid-to-high-end die-casting with ink spraying / powder spraying appearance parts, being the core manufacturer of computer peripheral die-cast parts.

Comprehensive industry chain support: Covering the entire process from mold design, injection molding, die-casting processing to spraying, providing independent support throughout the process for customers and offering one-stop customized services.



Business Scope

Covers plastic and metal mold design and manufacturing, CNC die casting, injection molding, smart product development, product coating, and automated equipment R&D.



Keycap Manufacturing

Annual keycap production capacity of 36 million sets and a monthly mold output of 60 sets.



欧希德
OSHID

品牌理念

Brand Philosophy

品牌愿景

成为精密智造领域标杆企业，以高品质产品与服务，让世界见证“中国智造”的卓越实力。

Brand Vision

To become a benchmark enterprise in precision intelligent manufacturing, delivering high-quality products and services that let the world witness the excellence of “China’s Intelligent Manufacturing”.

品牌使命

追求员工幸福与成长，以技术创新满足客户需求，助力“中国智造”走向全球，让世界爱上中国品牌。

Brand Mission

To pursue employee happiness and growth, leverage technological innovation to meet customer needs, and help “China’s Intelligent Manufacturing” reach global markets—winning the world’s admiration for Chinese brands.





欧希德
O S H I D

品牌理念

Brand Philosophy

核心理营理念

诚信为本：以诚信立业，与客户、伙伴共建长期信任。

客户至上：深度洞察需求，提供定制化解决方案。

开拓创新：250项专利驱动技术突破，引领行业升级。

精益求精：从模具设计到注塑成型，追求毫米级精度。

绿色责任：将环保理念融入产品全生命周期，致力于可持续发展。

Core Business Philosophy

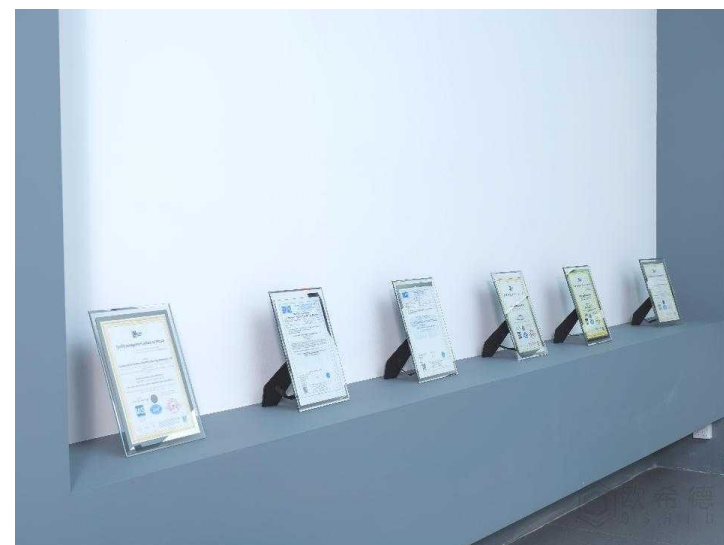
Integrity First: Build our business on honesty, fostering long-term trust with customers and partners.

Customer-Oriented: Deeply understand customer needs and deliver tailored solutions.

Innovation-Driven: Over 250 patents powering continuous breakthroughs and leading industry upgrades.

Pursuit of Excellence: From mold design to injection molding, striving for millimeter-level precision.

Green Responsibility: Integrating environmental principles into the full product lifecycle to promote sustainable development.





欧希德
OSHID

品牌实力与践行

Brand Strength & Practice

技术领先: 掌握软胶与硬胶双色注塑核心技术, 年产能3600万套键帽, 模具月产60套, 高效交付。

全球市场: 服务世界知名外设品牌, 推动“世界电竞外设之都”建设。

员工关怀: 打造舒适办公环境, 激发团队创造力, 实现共同成长。

社会责任: 践行节能环保, 通过技术优化减少资源消耗。

Technological Leadership: Mastering core technologies in double-shot injection molding with both soft and hard materials; annual output of 36 million keycap sets; 60 molds produced monthly for efficient delivery.

Global Reach: Partnering with world-renowned peripheral brands and contributing to the development of the “Global Capital of Esports Peripherals.”

Employee Care: Creating a comfortable work environment that inspires creativity and fosters shared growth.

Social Responsibility: Committed to energy saving and environmental protection by reducing resource consumption through technological optimization.

广东欧希德以“品质”为基, 以“创新”为翼, 持续突破, 致力于成为客户首选、行业尊敬的全球化品牌。

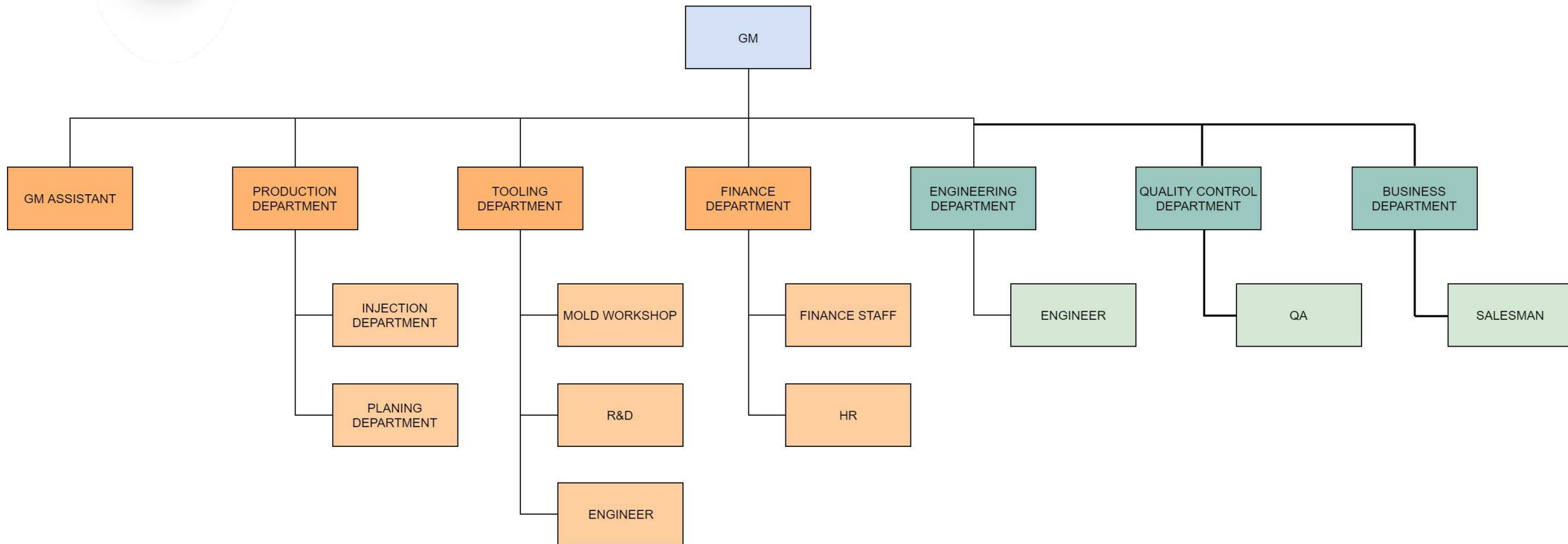
At Guangdong OSHID, “Quality” is our foundation and “Innovation” is our wings. We continually break new ground to become the customer’s first choice and a globally respected brand in the industry.





组织架构图

Organization Structure





公司简介

COMPANY PROFILE





PART 02
发展历程
Milestone



欧希德
OSHID

发展历程

Milestone

2005年

创办协鑫（欧希德前身）
Xiexing Founded (Predecessor of Oshid)

2008年

成立昆山协鑫
Kunshan Xiexing Founded

2012年

由生产零件到生产半成品（模仁）
Transitioned from making parts to Semi-Finished Products

2013年

生产自主研发的模具，成立欧希德精密模具有限公司Independent R&D Mould.
Founded Oshid Precision Mould Co., Ltd .

2015年

拥有15台双色注塑机
Acquired 15 double-shots injection machines

2022年

5万平方米的石排新厂房落成并投用，奠定全球布局基础，助力企业扬帆国际市场
The completion and operation of the new 50,000-square-meter Shipai facility lay the foundation for global growth, propelling Oshid into international markets.

2019年

2019 年于台湾地区设办事处分公司，赴港参展，拓展港台业务，强化区域布局与品牌影响，助力企业发展战略推进
Regional Expansion
Since 2019, Oshid has expanded into Taiwan and Hong Kong, strengthening regional presence and supporting strategic growth.

2018年

成立欧希德智能科技有限公司.拥有自主研发的模具500多套
Dongguan Oshid intelligent technology Co., Ltd. Founded. Owns 500+ independent-developed moulds

2017年

拥有自主研发的模具300多套
Create 300 sets of Moulds independently.

2026年

全面构建全球化生产布局，东莞石排60000 平方米总部工厂与13000平方米专业压铸工厂双核联动投产，东莞寮步工厂提质升级，越南海防工厂实现稳定量产，四大生产基地协同发力，全面覆盖压铸、注塑、模具制造、表面处理全工艺链条，企业全球核心竞争力实现跨越式提升。

2026

A comprehensive global production layout has been fully established. The 60,000-square-meter headquarters factory in Shida, Dongguan, and the 13,000-square-meter professional die-casting factory have been jointly put into operation. The factory in Liabu, Dongguan has been upgraded and improved. The factory in Haiphong, Vietnam has achieved stable mass production. The four production bases have worked together to jointly drive development, covering the entire process chain of die-casting, injection molding, mold manufacturing, and surface treatment. The global core competitiveness of the enterprise has achieved a leapfrog improvement.



PART 03
全球生产基地
Global Production Bases



欧希德
OSHID

越南工厂

Vietnam Factory

位置：海防市南 Cau Kien 工业园区，距光寶25分钟、智迪50分钟

Location: Nam Cau Kien Industrial Park, 25 mins from Liteon, 50 mins from Gtech

规模：3400m²（厂房+办公），2025年11月量产

Area: 3,400m²; mass production starts Nov 2025

功能布局：注塑区、测量实验室、丝印室、组装区等

Layout: injection area, measurement lab, printing room, assembly line

产能规划：短期（2025 Q4）2k套/日，长期14k套/日

Capacity: 2k sets/day (2025 Q4); 14k sets/day (long-term)



**Location: Nam Cau Kien Industrial Park
Hoang Dong Commune, Thuy Nguyen District, Hai Phong City**



越南工厂

Vietnam Factory

Injection/Production Area

Equipment		Equipment	
800T 3-shot JONWEI 三色機		Yeon Chin 650 CNC	
550T 3-Shot JONWEI 三色機		5 Axis Automation – Komans 科曼斯机械手	
Autoloader-Kawata 抽烤一體機		Automatic Placement – Topstar 自動上板機-拓斯达	



越南工厂

Vietnam Factory

Injection/Production Area

Equipment		Equipment	
Abrasion test machine 多功能酒精橡皮耐磨测试仪		Surface roughness tester 粗糙度测试仪	
2-D measurement VMS.4030G		QUV Tester	
Light transmittance tester 透光儀		Height gauge ID-C150MXB	



越南工厂

Vietnam Factory

Injection/Production Area

Equipment		Equipment	
AOI Equipment	 A large industrial AOI (Automated Optical Inspection) machine with a monitor and a tray for components.	Pad Print Machine	 A worker operating a pad print machine in a factory setting.
UV Baker	 A large industrial UV Baker machine used for curing coatings.	Colorimeter 色差儀	 A colorimeter device connected to a computer monitor, used for color measurement.
Silk Print Machine	 A silk screen printing machine in a factory environment.	Color Controller Light Box	 A color controller light box used for color calibration and control.



PART 04
主要业务及能力
Major Business and Capabilities



主要业务及能力

Major Bussiness capabilities

设计开发
Design and
Development

注塑成型
InjectionMolding

压铸
Die Casting

热转印
Dye-
sublimation

喷涂
Spray Painting

装配
Assembly

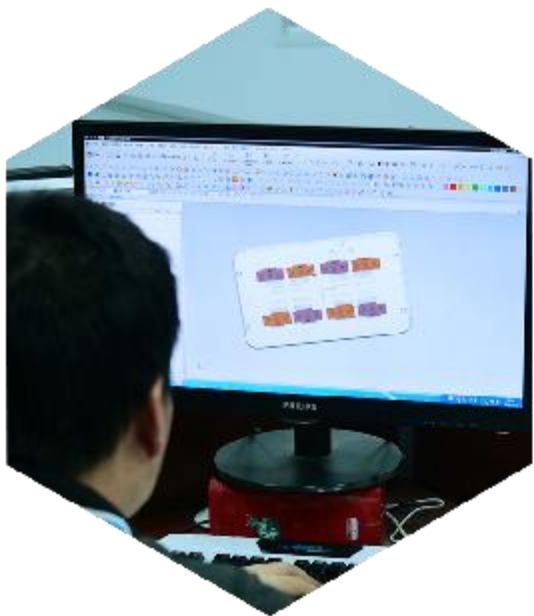


设计研发

Design and developmen

欧希德致力于产品设计、模具设计及产品手板开发，我们支持供应商前期参与，一并分析生产可行性，我们现在可以做单到多腔模具(可达100吨)、薄壁模具、双色模具、包胶模具、精密模具，目前工作间有162台85吨至600吨的注塑机器模具生产能量每月能达60套。

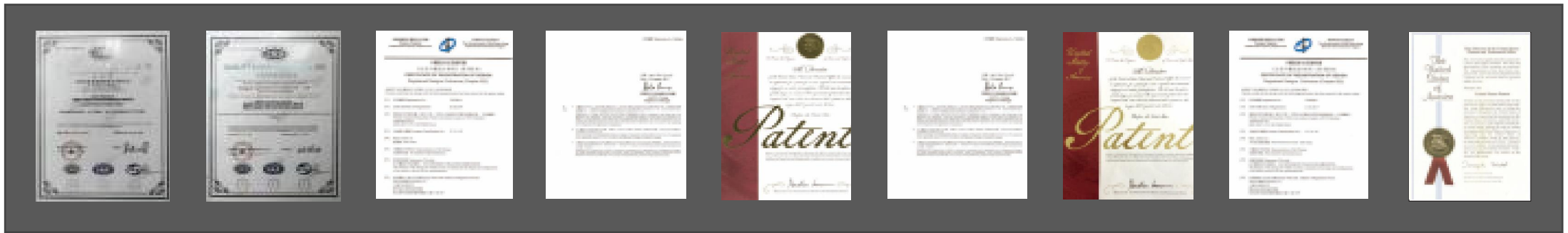
Oshid is committed to product design, mold design and product development, we support suppliers to participate in the early stage, together with the analysis of production feasibility, we can do now Single to multi-cavity mold (up to 100 tons), thin-wall mold, two-color mold, coated mold, precision mold, there are 162 sets of 85 tons to 600 tons of injection molding machines in the workshop. The mold production capacity can reach 60 sets per month.





专利 Patent

1. International patent / 国际专利



2. Software copyright / 软件著作权





专利

Patent

3.Domestic patent / 国内专利





注塑成型

Injecting Molding

欧希德精密智造在注塑成型领域展现出超凡实力，以高精度的工艺水准和卓越的品质把控独树一帜。我们精通双色注塑成型，凭借先进的设备和精湛的技术，实现色彩的精准融合与分布，达到极高的视觉精度。包胶注塑成型工艺，能确保胶层与主体的贴合精度，为产品带来出色的性能和质感。模内镶件注塑和模内包胶注塑技术，更是将精度发挥到极致，精确嵌入镶件和包胶，使产品细节完美无瑕。值得骄傲的是，欧希德精密智造单日平均产量可达4.5万件，在保证高精度的同时实现高效生产。我们对精度的不懈追求，为客户提供了品质卓越、性能可靠的注塑产品，是您值得信赖的合作伙伴。

Oshid Precision Intelligent Manufacturing in the field of injection molding shows extraordinary strength, with high precision technology level and excellent quality control unique. We are proficient in two-color injection molding, with advanced equipment and superb technology, to achieve accurate color fusion and distribution, to achieve high visual accuracy. The plastic injection molding process can ensure the fitting accuracy of the adhesive layer and the main body, and bring excellent performance and texture to the product. In-mold injection molding and in-mold adhesive injection molding technology, but also to play the precision to the extreme, accurate embedding of the insert and adhesive, so that the product details are perfect. It is proud that the average daily output of Oshid precision intelligent manufacturing can reach 45,000 pieces, while ensuring high precision and efficient production. Our relentless pursuit of precision, to provide customers with excellent quality, reliable performance of injection molding products, is your trusted partner.





核心压铸厂 (东莞石排)

Die Casting Factory ()

占地面积: 13000m², 为专业压铸智造基地, 配套全制程表面处理车间;

功能布局: 压铸区、CNC 加工区、表面处理区 (喷油 / 喷粉 / 镭雕)、测量实验室、印刷室、组装区;

核心定位: 中高端五金压铸外观件研发与生产, 主打电脑键盘、鼠标、键帽等电竞外设及服务器周边压铸件, 实现“压铸 - 加工 - 表面处理 - 检测”一体化生产。

Floor area: 13,000 square meters. It is a professional die-casting manufacturing base, equipped with a complete production process surface treatment workshop;

Functional layout: Die-casting area, CNC processing area, surface treatment area (spraying oil / spraying powder / laser engraving), measurement laboratory, printing room, assembly area;

Core positioning: R&D and production of mid-to-high-end die-casting exterior components. Mainly focuses on computer keyboards, mice, keycaps and other gaming peripherals as well as server peripheral die-casting parts, achieving "die-casting - processing - surface treatment - inspection" integrated production.

目前最大月产能:

五金键盘—40000套;

五金键帽—30000套;

五金鼠标—20000套;

2026产能陆续持续提升。

Current maximum monthly production capacity:

Hardware keyboards - 40,000 sets;

Hardware keycaps - 30,000 sets;

Hardware mice - 20,000 sets;

Production capacity will continue to increase gradually in 2026.





欧希德
OSHID

压铸

Die Casting

核心优势

1. 整合型複合生产： 高产量塑胶射出与精密金属压铸。
2. 先进 CNC 工程： 针对複杂几何形状与严苛公差进行多轴加工。
3. 高端表面处理美学： 自动化机械手臂研磨与高级涂装解决方案。
4. 厂内模具开发造诣： 具备先进稳定技术的快速模具开发。
5. 数据驱动的品质保证： 严格测试与自动光学检测 (AOI)。

Core Strength

- Integrated Hybrid Production: High-volume **plastic injection & precision metal die-casting**.
- Advanced **CNC Engineering**: Multi-axis machining for complex geometries and tight tolerances.
- Premium **Surface Aesthetics**: Automated robotic grinding and high-end coating solutions.
- In-House Tooling Mastery: Rapid mold development with advanced thermal stabilization.
- **Data-Driven Quality Assurance**: Rigorous testing and automated optical inspection (AOI).





欧希德
O S H I D

压铸

Die Casting

制造实力

1

先进压铸与热校直

专攻具备高美学要求的金属压铸、复杂的几何结构以及精细的曲面设计。我们确保超高的平整度，为高端组装件提供完美的适配精度。

2

高阶多轴 CNC 加工

专为满足严苛公差而研发，精准对接高端消费电子产品与各类工业应用需求。

3

自动化表面预处理

交付无瑕且具高级感的金属触感，透过自动化流程彻底消除人工操作误差与表面不一致性。

总结优势

我们将复杂的结构几何与精密的表面处理完美结合，透过一站式的自动化制程，确保产品从模具开发到最终组装都具备极致的品质与完美的配合度。



压铸

Die Casting

Manufacturing Excellence

1

Advanced Die-Casting & Thermal Straightening

Guaranteed ultra-high flatness and perfect fitment for premium assemblies.

2

High-Tier Multi-Axis CNC Machining

Engineered to meet tight tolerances for high-end consumer electronics and industrial applications.

3

Automated Surface Pre-treatment

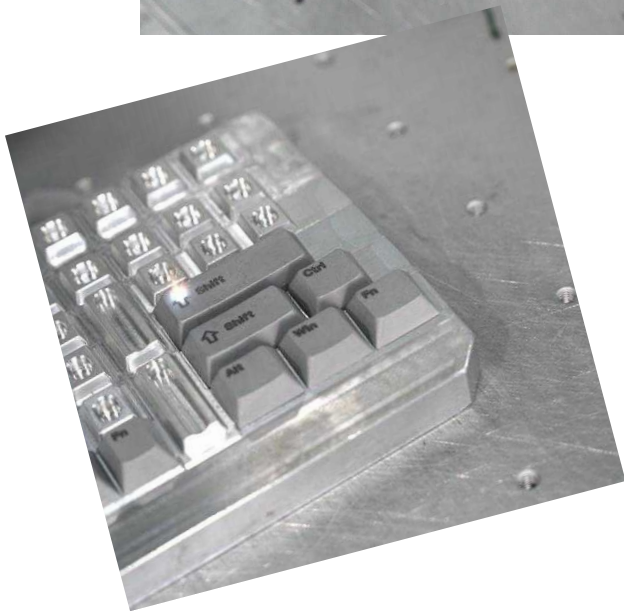
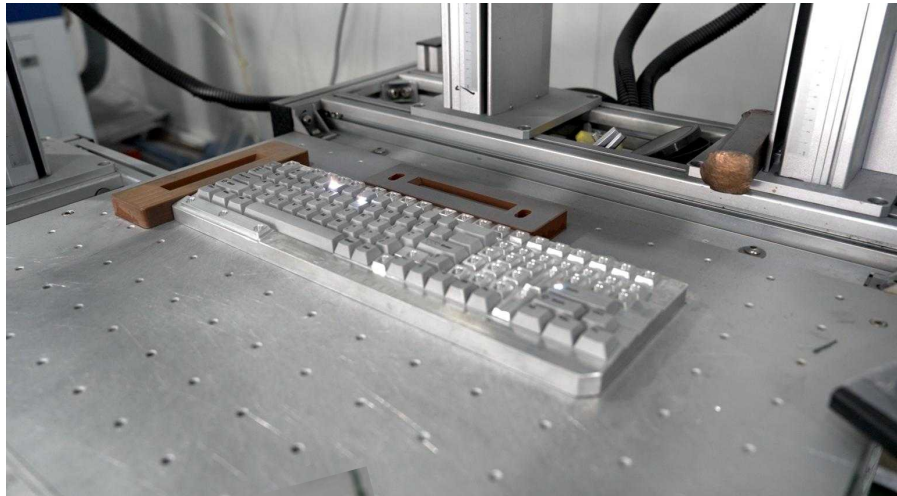
delivering a flawless, premium metallic touch that eliminates human error and surface variance.

= Specialized in high-aesthetic metal die-casting, complex structural geometries, and intricate curved surfaces.



压铸

Die Casting





欧希德
O S H I D

压铸设备

Die Casting Equipment

设备型号	图示	设备型号	图示
压铸机 品牌：伊之密 吨位：400T 1台 500T 2台		4轴CNC机台 品牌：法兰克/三菱系统 吨位：T700 22台	
热整形油压机 吨位：40T 2台		5轴CNC机台 品牌：法兰克系统 数量：1台	
油压冲床 吨位：40T 2台		5轴自动打磨机台 品牌：春草研磨 数量：1台	



欧希德
O S H I D

压铸设备

Die Casting Equipment

设备型号	图示	设备型号	图示
磁力研磨机 品牌：东元研磨 数量：2台		移印烤炉 数量：2台	
自动喷砂机 品牌：美辉 数量：1台		激光镭雕机 功率：100W 数量：3台	
移印半自动生产线1条		半自动喷粉线 数量：2条	



压铸设备

Die Casting Equipment

表面处理技术

透过垂直整合产线与机器人自动化的深度结合，我们提供一站式单一窗口解决方案，确保从第一件产品到第一万件，皆能维持完全一致的高精度品质。

- 均一化品质
- 高效
- 垂直整合

Surface Treatment

By combining vertical integration with robotic automation, we delivers a single-source solution that guarantees identical, high-precision quality from the first unit to the 10,000th.

Process Category	Equipment Name	Specifications / Model	Quantity
Precision Die-Casting	High-Pressure Die-Casting Machine	400T	1 Unit
		500T	2 Units
Structural Integrity	Thermal Straightening Hydraulic Press	40T	2 Units
	Hydraulic Punching Machine	40T	2 Units
High-Tier Machining	4-Axis CNC Machining Center	T700	22 Units
	5-Axis CNC Machining Center	—	1 Unit
Automated Finishing	5-Axis Automated Grinding Machine	Robotic Finishing	1 Unit
Surface Pre-treatment	TECO (东元研磨) Magnetic Polishing Machine	—	
	Meihui (美辉) Automated Sandblasting Machine	—	1 Unit
Coating & Curing	Semi-Auto Powder Coating Line	—	2 Lines
	Pad Printing Curing Oven	—	2 Units
Printing & Identification	Semi-Auto Pad Printing Line	—	1 Line
	Fiber Laser Engraving Machine	100w	3 Units



热转印

Dye-sublimation

欧希德配备多台先进的热升华机器，在热转印领域积累了深厚且丰富的经验。

我们对色彩的把控堪称一绝，通过精准的技术手段和专业的调色流程，确保每一次热转印的色彩都鲜艳、逼真且持久，完美再现设计的细节与魅力。

在压力与温度的控制上，欧希德更是展现出了卓越的精准度。

凭借先进的控制系统和精密的传感器，能够精确调节压力和温度的参数，从而保证热转印过程中图案的清晰度、附着力和质感，无论是在柔软的纺织品还是坚硬的材料表面，都能实现高质量的转印效果。

Ohid is equipped with a number of advanced dye-sublimation machines, and has accumulated deep and rich experience in the field of thermal transfer. Our control of color is exceptional. Through precise technical means and professional color mixing process, we ensure that the colors of each heat transfer are bright, realistic and lasting, and perfectly reproduce the details and charm of the design. In the control of pressure and temperature, Oshid also shows excellent accuracy. With advanced control systems and sophisticated sensors, the pressure and temperature parameters can be precisely adjusted to ensure the clarity, adhesion and texture of the pattern during the thermal transfer process, whether on soft textiles or hard material surfaces, to achieve high-quality transfer results.





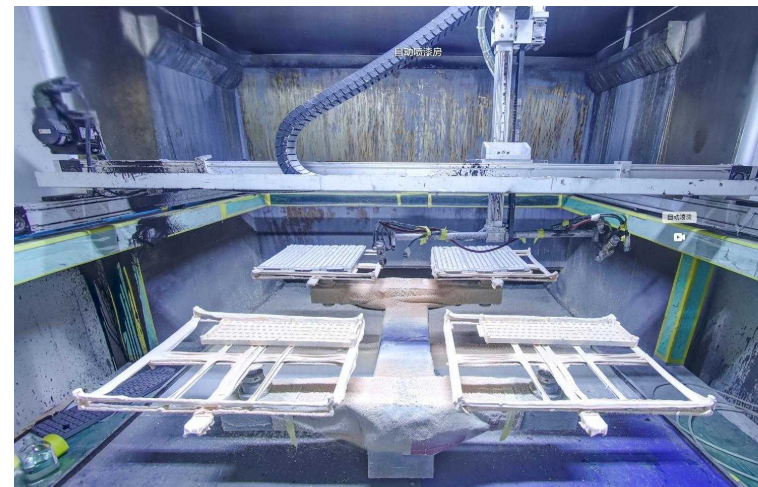
欧希德
OSHID

喷涂

Spray Painting

欧希德精密智造在喷涂领域彰显深厚专业底蕴与领先技术实力。核心业务涵盖喷油和镭雕，为客户提供定制化、高品质表面处理方案，满足装饰性与功能性涂层需求。喷涂方式上，人工喷涂由经验丰富人员操作，精细处理，彰显个性；自动喷涂借助先进技术与智能系统，高效大规模生产，确保质量与外观高度一致。公司建有高标准无尘车间，采用先进净化技术，严格控制环境参数避免灰尘杂质影响，保障涂层品质。引进的自动五轴喷涂机达行业前沿水平，具备出色运动灵活性与高精度定位能力，能对复杂工件实现精准均匀的涂层覆盖，这极高表面质量与工艺精度。

Oshid Precision Intelligent Manufacturing in the field of spraying demonstrates deep professional heritage and leading technical strength. The core business covers spray painting and laser-etching, providing customers with customized, high-quality surface treatment solutions to meet decorative and functional coating needs. On the spraying method, manual spraying is operated by experienced personnel, fine processing, showing personality. With advanced technology and intelligent systems, efficient mass production ensures a high degree of consistency in quality and appearance. The company has a high standard dust-free workshop, the use of advanced purification technology, strict control of environmental parameters, to avoid the impact of dust impurities, to ensure the quality of coating. The introduced automatic five-axis spraying machine has reached the forefront of the industry, with excellent motion flexibility and high-precision positioning ability, and can achieve accurate and uniform coating of complex workpieces, achieving extremely high surface quality and process accuracy. With professionalism, rigor and innovation, OSHID Precision Intelligent Manufacturing continues to improve technology and services to create value for customers, and is the ideal partner in the field of spraying.





欧希德
OSHID

装配

Assembly

我们拥有多种先进的装配技术，其中超声波焊接技术能够实现高强度、高精度的连接，确保组件之间的稳固结合；超声波插入技术则以其高效和精准的特点，大大提高了装配效率和质量。热熔模具组装工艺独具优势，通过精确的温度和压力控制，使零部件完美融合，提升产品的整体性能。在无尘组装方面，我们设有高标准的无尘车间，为对环境要求极高的产品提供了纯净的装配空间，有效避免了灰尘等杂质对产品的影响。经验丰富的工人组装团队也是我们的核心力量之一，他们凭借精湛的技术和严谨的工作态度，能够处理各种复杂的装配任务。

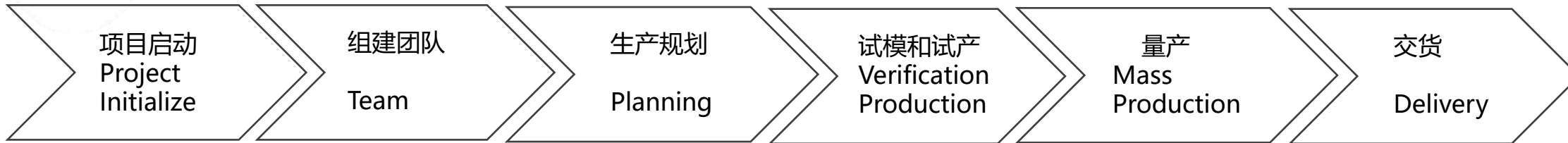
We have a variety of advanced assembly technologies, among which ultrasonic welding technology can achieve high-strength, high-precision connections to ensure stable bonding between components; ultrasonic insertion technology greatly improves assembly efficiency and quality with its high efficiency and precision. The hot-melt mold assembly process has unique advantages. Through precise temperature and pressure control, components are perfectly integrated to improve the overall performance of the product. In terms of dust-free assembly, we have high-standard dust-free workshops that provide a pure assembly space for products with extremely high environmental requirements, effectively avoiding the impact of dust and other impurities on the products. Additionally, our team of experienced assembly workers is one of our core strengths. With their superb skills and rigorous work attitude, they are capable of handling various complex assembly tasks.





项目进程

Project Process



- 设计审查 Design Review/ESI
- 详细规划 Detailed Planning
- Material
- Parts
- Manufacture Capability
- Manufacture Process

- 试产 Trial Production
- 试模 Trial Molding
- 组装 Assembly
- 前期设计制作 Verification Production design
- MP ready

交货准时 Deliver on time! **质量保证 Quality Assurance !** **客户满意 Customer satisfaction !**



PART 05
设备
Equipment



注塑设备

Injection Equipment

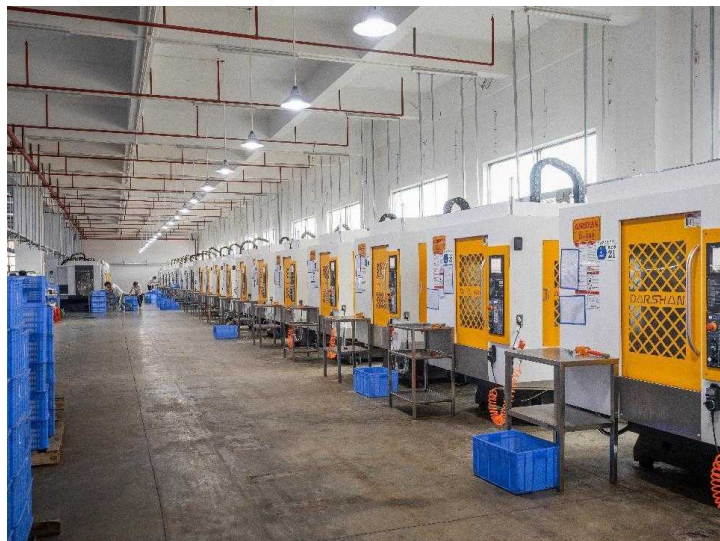


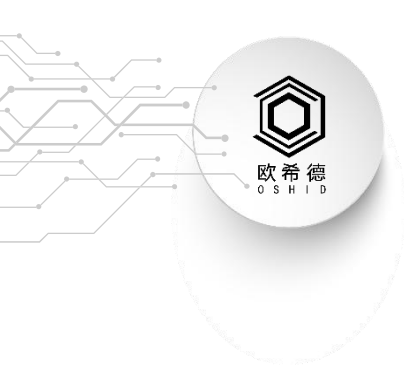


欧希德
OSHID

各种设备

Various Equipment





设备单

Equipment Form

No.	Equipment	Model	Brand	QTY	Capacity
1	三色注塑机 Triple-shot injection machine/600T	600T	Zongwei	4	四柱间距: 1250MM
2	三色注塑机 Triple-shot injection machine/550T	550T	Zongwei	5	四柱间距: 1050MM
3	四色注塑机 Four-color shot injection machine/550T	400T	Zongwei	1	四柱间距: 1100MM
4	三色注塑机 Triple-shot injection machine/380T	380T	Zongwe	1	四柱间距: 1050MM
			Total	11	



欧希德
O S H I D

设备单

Equipment Form

No.	Equipment	Model	Brand	QTY	Capacity
1	双色注塑机 Double-shot injection machine/600T	600T	Zongwei	12	四柱间距：1250MM
2	双色注塑机 Double-shot injection machine/380T	550T	Zongwei	8	四柱间距：1050MM
3	双色注塑机 Double shot injection machine/550T	400T	Fuqiangxing	10	四柱间距：1100MM
4	双色注塑机 Double shot injection machine/380T	380T	Zongwe	12	四柱间距：1050MM
5	双色注塑机 Double shot injection machine/280T	280T	Zongwei	12	四柱间距：800MM
6	双色注塑机 Double shot injection machine/250T	IA2500/b-J	Haitian	10	四柱间距：750MM
7	双色注塑机 Double shot injection machine/230T	IA2300/b-J	Haitian	6	四柱间距：680MM
8	双色注塑机 Double shot injection machine/160T	IA1600/b-J	Haitian	10	四柱间距：580MM
			total	80	



欧希德
O S H I D

设备单

Equipment Form

No	Equipment	Model	Brand	QTY	Capacity
1	单色注塑机 Single shot injection/350	PL3500/1000J	Haitian	15	四柱间距: 700MM
2	单色注塑机 Single shot injection/300T	PL3000/1000J	Haitian	2	四柱间距: 690MM
3	单色注塑机 Single shot injection/260T	PL2600/1000J	Haitian	3	四柱间距: 640MM
4	单色注塑机 Single shot injection/250T	PL2500/1000J	Haitian	3	四柱间距: 640MM
5	单色注塑机 Single shot injection/200T	IA2000/b-J	Haitian	2	四柱间距: 620MM
6	单色注塑机 Single shot injection/190T	IA1900/b-J	Haitian	2	四柱间距: 600MM
7	单色注塑机 Single shot injection/160T	IA1600/b-J	Haitian	10	四柱间距: 490MM
8	单色注塑机 Single shot injection/120T	IA1200/b-J	Haitian	20	四柱间距: 490MM
9	单色注塑机 Single shot injection/85T	IA850/b-J	Haitian	3	四柱间距: 370MM
			Total	60	

欧希德
O S H I D

设备单

Equipment Form

NO	Equipment	Model	Brand	QTY	Capacity
1	火花机 Electrical Discharge Machining(EDM)	450	台一	9	有效行程: 500*400*300
2	磨床 Grinding Machine	旺磐618	旺磐	12	有效行程: 400*280*280
3	铣床 Milling Machine	捷甬达3#	捷甬达	10	有效行程: 700*400*300
4	中走丝 Middle-speed WEDM Machine	联合兄弟400	联合兄弟	5	有效行程: 500*400*300
5	慢走丝 WEDM-LS	沙迪克AQ400LS	沙迪克	5	有效行程: 400*400*300
6	镜面火花机 Mirror Electrical Discharge Machining	沙迪克AD30LS	沙迪克	1	有效行程: 350*300*250
		沙迪克AD32LS	沙迪克	3	有效行程: 350*320*250
		沙迪克AG60LS	沙迪克	1	有效行程: 600*350*250
7	CNC	高速机永进-650	永进	3	有效行程: 600*500*400
		台群CNC-VMC850	台群	3	有效行程: 850*500*450
		北京精雕V400	北京精雕	3	有效行程: 600*500*350
		CNC加工中心	发那科	3	有效行程: 600*500*400
		华群雕铣机HD-650	华群	2	有效行程: 600*500*400
		JCPWT600-A8	JDP	1	有效行程: 600*500*350
		数控机床钻攻中心560L	嘉泰	13	有效行程: 500*400*300
		Total		74	



欧希德
O S H I D

设备单

Equipment Form

No.	Equipment	Model	Brand	QTY	Capacity
1	压铸机 Die casting machine/DM400HII	400T	伊之密	1	四柱间距: 810MM
2	压铸机 Die casting machine/DM500HII	500T	伊之密	1	四柱间距: 940MM
3	800KG节能型电炉/Energy saving electric boiler	800KG	金皇	1	
4	600KG节能型电炉/Energy saving electric boiler	600KG	金皇	1	
5	400T压铸机周边自动化/Automation machine	自动化	辉胜	1	
6	500T压铸机周边自动化/Automation machine	自动化	辉胜	1	
			Total	6	



测量能力

Measurement capability

设备名 Equipment	型号 Model	品牌 Brand	数量 Quantity	测量范围 Measurement Range	精度 Accuracy
投影仪 Projector 20倍	YX-2030	怡信	1	500*400*400mm	0.001mm
投影仪 Projector 20倍	YX-2030	怡信	1	500*400*400mm	0.001mm
高度仪 Altimeter	ID-C150MXB	三丰	1	500*400*400mm	0.001mm
显微镜 Microscope BS-225	150*300mm	Union	1	150*300*25mm	0.001mm
2次元投影仪 2D Projector	万濠VMS-4030G	万濠	2	400*300*250mm	0.002mm
3次元投影仪 3D Projector	海克斯康	Union	1	1000*800*600mm	0.0001mm





PART 06
质量控制体系
Quality Control System



欧希德
OCEED

质量控制体系

Quality Control System

质量控制体系

核心目标

全流程可追溯管控，实现产品“零缺陷”，符合国际标准与客户需求。

全链条质控

原料

全球优质供应商筛选，多重理化检测，100% 溯源管理。

生产

“自检 + 互检 + 专检” 三级品控，实时预警偏差。

成品

超行业标准检测，10% 批次抽检测试。

认证

通过 ISO9001，质量管理体系成熟度达4级（优化级）。
3% 年销售额投入技术升级，客户反馈驱动每月工艺优化。

视质量为生命线，铸就欧希德硬核智造力。

Stringent Standards, Premium Quality

Core Goal

The full-process traceability and control ensures "zero-defect" products that comply with international standards and customer requirements.

Chain-wide Control

Raw Materials

Globally sourced premium suppliers, multi-layered physical/chemical testing, and 100% traceability management.



Production

"Self-check + Mutual-check + Expert-check" three-tier quality control with real-time deviation alerts.

Finished Products

Exceeding industry-standard testing with 10% batch sampling inspection.

Improvement

Certified to ISO9001 with Level 4 (Optimization Level) maturity in quality management systems.

3% of annual revenue invested in technological upgrades, with monthly process optimizations driven by customer feedback.

We treat quality as our lifeline, forging OCEED's core smart manufacturing excellence.



PART 07
业务领域
Business Scope

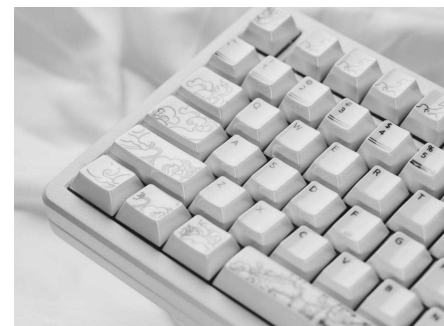
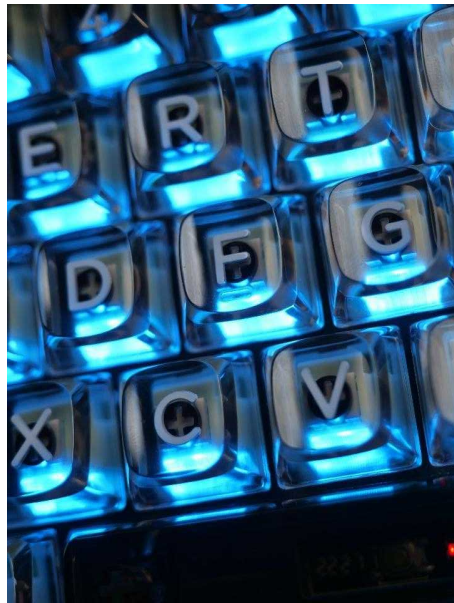


欧希德
OSHID

业务领域

Business Scope

模具设计与制造 (塑胶/金属) / Mold Design & Manufacturing (plastic/metal)



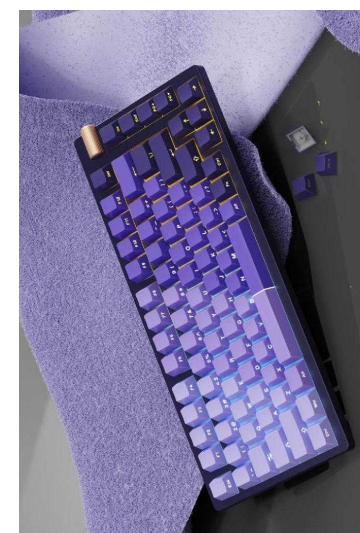
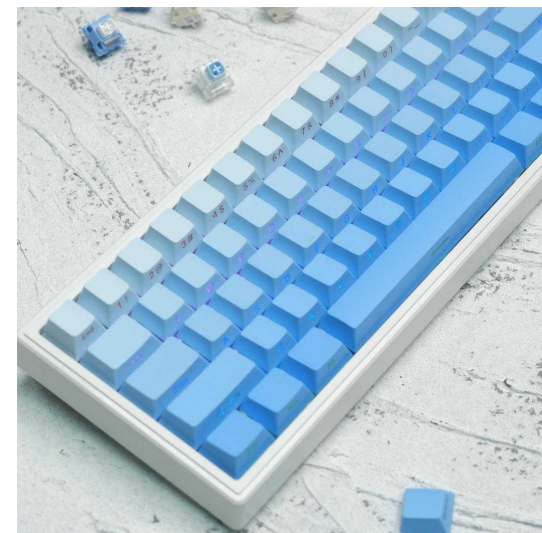


欧希德
OSHID

业务领域

Business Scope

◆ 注塑成型 (单色/双色/多色) / Injection Molding (single/dual/multi-shot)





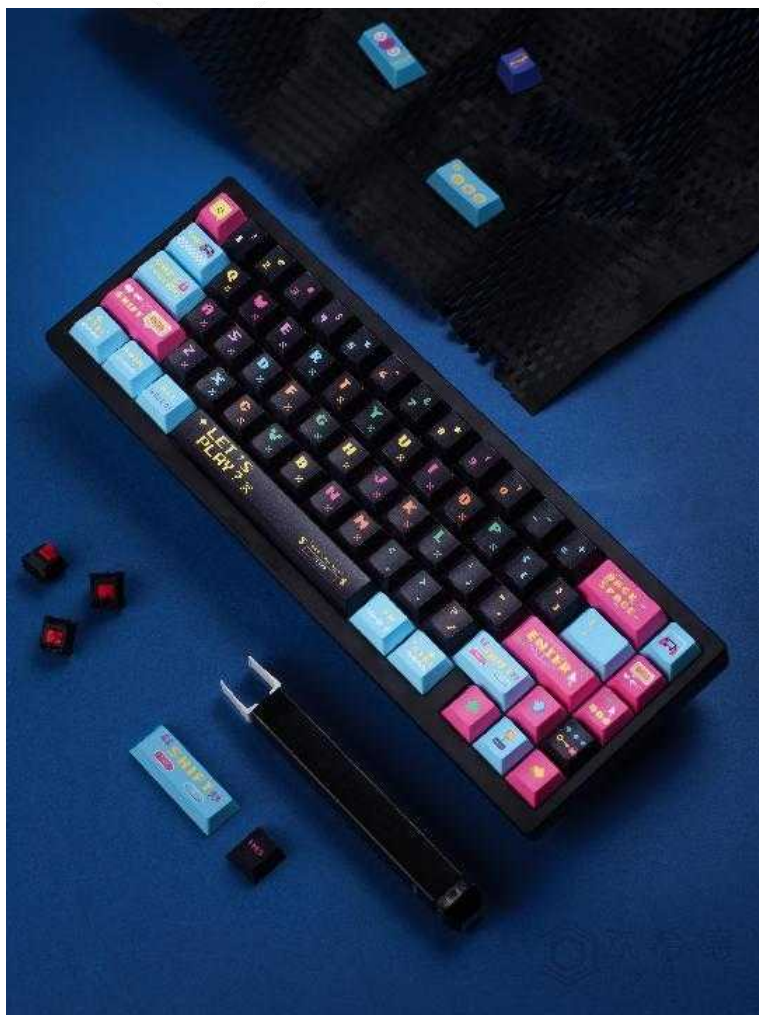
欧希德
OSHID

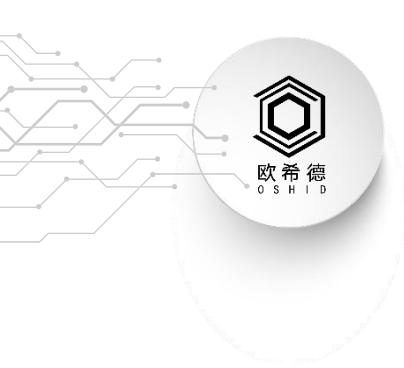
业务领域

Business Scope



热转印 / Dye-sublimation





业务领域

Business Scope

◆ CNC压铸与加工 / CNC Die Casting & Processing



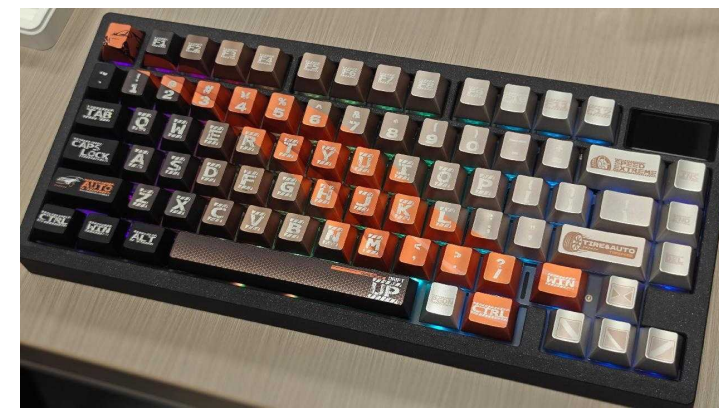


欧希德
OSHID

业务领域

Business Scope

喷涂 / Spray Painting





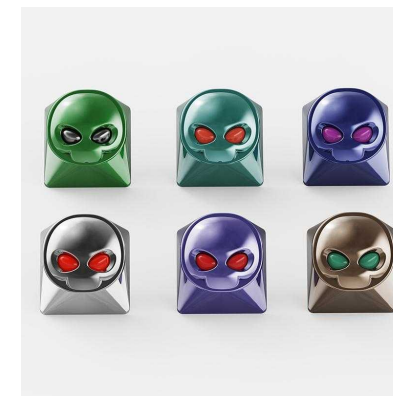
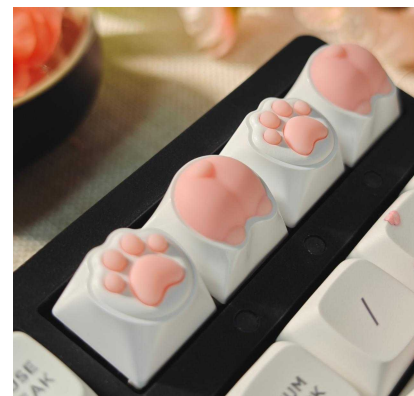
欧希德
OSHID

业务领域

Business Scope

树脂键帽 / Resin Keycaps

个性键帽 / Artisan Keycaps

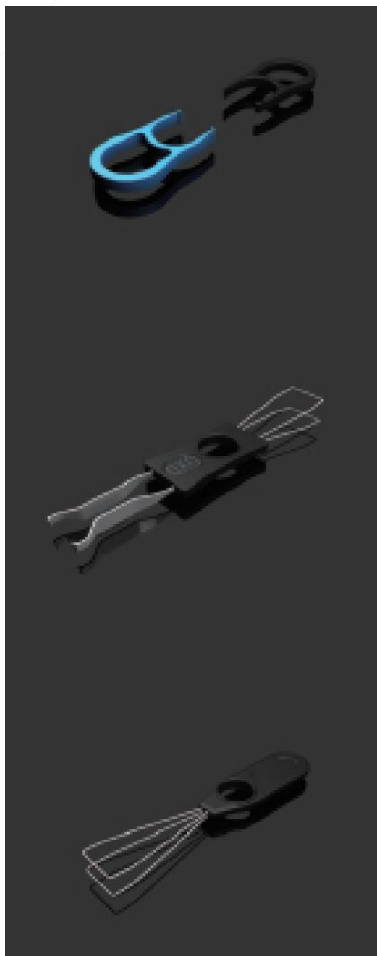




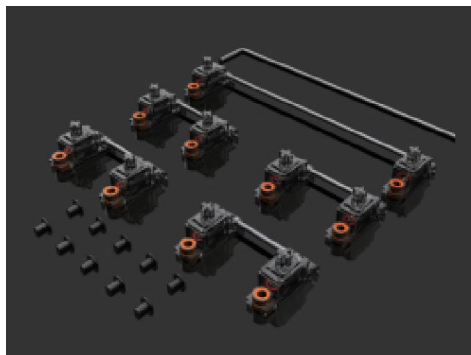
欧希德
OSHID

业务领域

Business Scope



拔键器 / Keycap
Puller



卫星轴 /PCB Transparent
Stabilizer



鼠标固线器 /Mouse Bungee



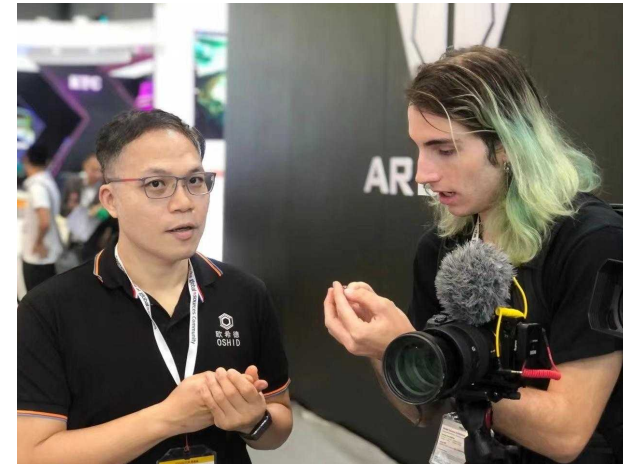
手托 /Keyboard Wrist Rest



PART 08
行业展会与市场
Trade Shows & Market

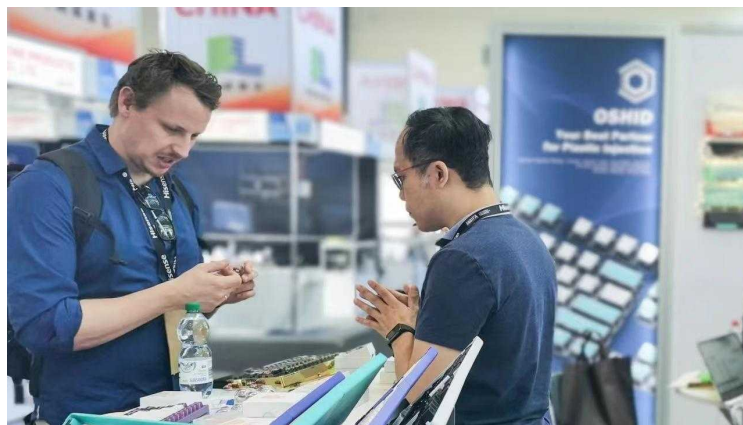
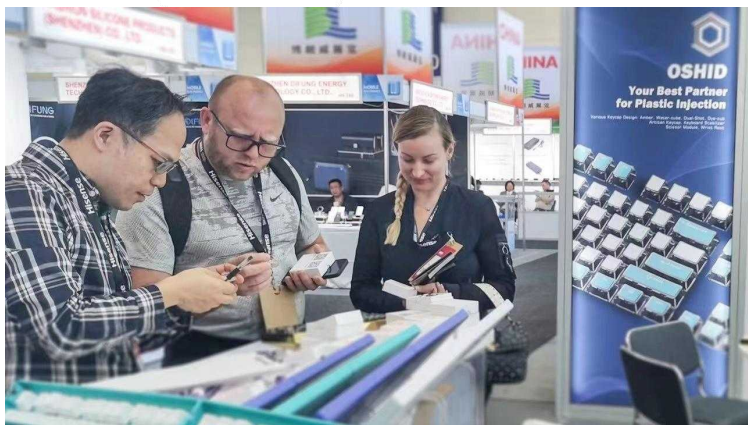


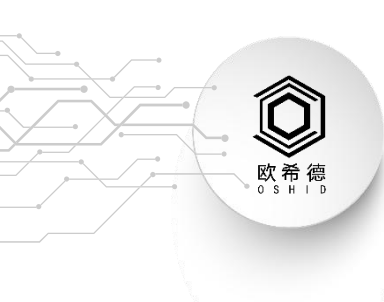
香港展 HK Show





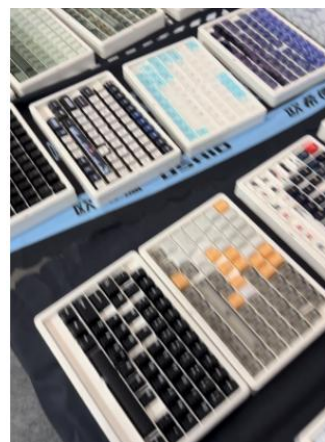
柏林展 IFA Show





哈萨克斯坦展

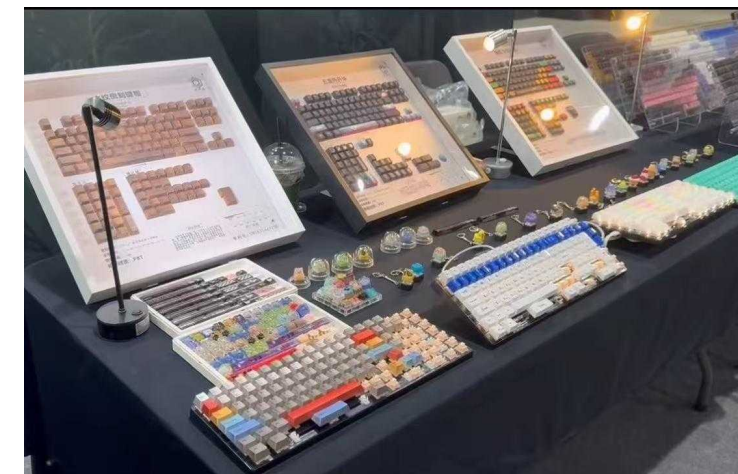
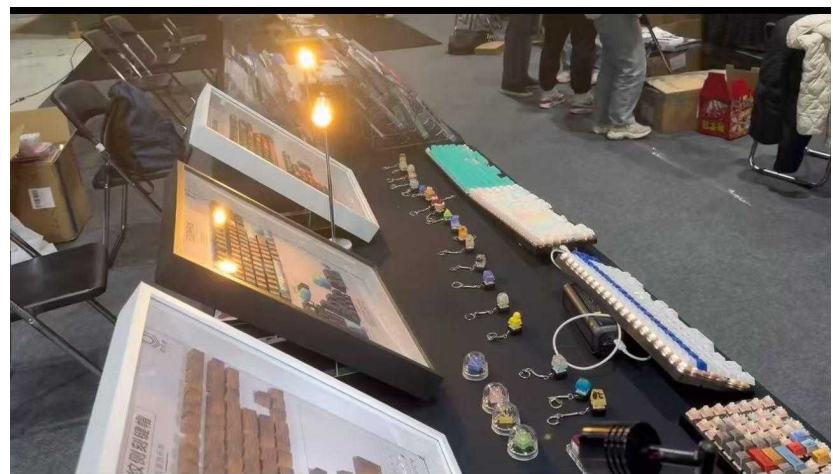
ELECTRONICA EXPO KAZAKHSTAN





首尔展

Seoul Mechanical Keyboard EXPO 2025





俄罗斯展

Consumer Electronics Show 2025





PART 09
合作伙伴
Partners



合作伙伴 Partners





PART 10
未来展望
Future Outlook



欧希德
OSHID

未来展望

Future Outlook

技术深耕，引领智造

深化核心技术研发，加码产学研融合，布局新兴领域，持续领跑精密智造。

Deepen core tech R&D, boost industry-academia synergy, expand into emerging fields, lead precision manufacturing.

全球拓展，版图升级

巩固国内优势，依托“一带一路”开拓新兴市场，深化欧美合作，海外营收目标超50%。

Strengthen domestic leadership, leverage Belt & Road for emerging markets, deepen EU/US partnerships, target >50% overseas revenue.

创新驱动，生态赋能

聚焦电竞外设革新，延展多行业定制产品线，构建精密组件生态体系。

Drive gaming peripheral innovation, expand cross-industry customized solutions, establish precision component ecosystems.

绿色智造，零碳未来

推行节能工艺优化，打造绿色供应链，2028年能耗降30%并实现零排放。

Optimize energy-efficient processes, build green supply chains, cut energy use 30% & achieve zero emissions by 2028.

人才筑基，卓越传承

完善培养体系，强化高端引才，建设“智造学院”，培育500名核心人才。

Enhance talent development, attract top experts, launch "Smart Manufacturing Academy", cultivate 500 key professionals.





欧希德
O S H I D

广东欧希德精密智造科技有限公司

Guangdong Oshid Precision Manufacturing Technology Co., Ltd.

地址: 广东省东莞市石排镇东园大道319号欧希德正门

官网: www.ouxi.com

电话: 0769-81559880

Qq社群: 824274200

Address: Main Entrance, Oshid, No. 319 Dongyuan Avenue,
Shipai Town, Dongguan, Guangdong, China

Website: www.ouxi.com

QQ Community: 824274200

Ins: oshidkeycaps

Email: support@oshid.com

THANK YOU

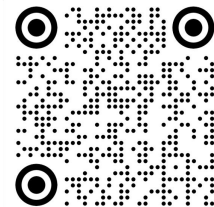
携手欧希德，共创精密智造新未来

Partner with Oshid for a precision manufacturing future



DOUYIN

抖音



REDNOTE

小红书



WECHAT OFFICIAL

ACCOUNT

公众号